

5) TABLE 1

Serial Number	Date Purchased	Quarterly visual inspection (Check when completed)				Owners Annual Inspection	Biannual Inspection Roaring Forties Service Station
		I	II	III	V		



SMA1500

Instructions for Self Inspection

SMA1501 - MANUAL INFLATION
SMA1502 - AUTO INFLATION



CONTENTS

CONTENTS1
VISUAL INSPECTION CHECKLIST PRIOR USAGE1
RE-ARMING ACCORDING TO YOUR MODEL4
ROUTINE INSPECTIONS OF YOUR PFD7
CARE AND MAINTENANCE INSTRUCTIONS7
WARNINGS:8

Safety Marine Australia Pty Ltd
P.O. Box 1121
Moorabbin
VIC 3189
AUSTRALIA
Tel: +61 03 9555 5211
sales@safetymarineaustr.com.au

Fax: +61 03 9553 4380

Email:

Do not flex, twist or wring your PFD unnecessarily;
Do not store your PFD in confined areas for an automatic. Inadvertent
inflation may cause damage;
Do not place your PFD in front of heater or direct sunlight. Your PFD welded
seams may delaminate rendering your PFD as unusable.
Do not forget to routinely check the integrity of you PFD

Fully inflate your PFD and hold oral tube valve under water to test for valve leakage. If bubbles appear, deflate and reinflate to test again. If it continues to leak, take your Inflatable PFD to your nearest Roaring Forties dealer for proper attention. Visually examine your PFD for physical damage like excessive abrasion, wear & tear, suspect stitching and contamination. Send it to your Roaring Forties service station for evaluation and/or servicing if you are confident in undertaking the task. Replace the automatic cartridge if cartridge will expire in 12 months

If the results of all the required tests and visual inspections are satisfactory, you now have to rearm your PFD and repack PFD as described above.

4) BI-ANNUALLY

Return you unit back to an authorised service station for a calibrated service inspection. And overpressure test

ROARING FORTIES ACCESSORIES

Re-arm kit (KIT160-33) For SMA1501
Re-arm kit (KIT400-33). For SMA 1502

CLEANING AND STORING OF YOUR INFLATABLE PFD SMA1501

Remove the CO2 cylinder. Use warm, soapy water to hand wash your PFD with a sponge and rinse it off with clean water. Dry your PFD using a plastic coat hanger. After drying, remember to re-reinstalled the CO2 cylinder to the inflator. See **Re-arming your PFD After Manual Inflation (SMA1501)**.

Your Inflatable PFD should be stored in a warm, well ventilated & dry place & out of direct sunlight.

Storage Temperature between 5°C and 60°C

CLEANING AND STORING OF YOUR INFLATABLE PFD SMA1502

Remove the CO2 cylinder and auto cartridge. Keep the cartridge dry. Use warm, soapy water to hand you're your PFD with a sponge. Rinse your PFD with clean water. Dry Inflatable PFD using a plastic coat hanger. Ensure the inflator is thoroughly dry before installing the automatic cartridge. Make sure to re-install an unused CO2 cylinder, (see **Re-arming your PFD SMA1502 as Manual with Automatic Backup or Manual only**).

Your Inflatable PFD should be stored in a warm, well ventilated & dry place and out of direct sunlight.

Storage Temperature between 5°C and 60°C.

WARNINGS:

Do not repair or alter the design of your PFD;

Do not double inflate your PFD – an action where an oral inflation is followed up with a COs gas cylinder inflation. This may over pressurise your PFD. Thus causing unnecessary damage to your PFD & even personal injury;

Do not use other size CO2 cylinder except 33gm CO2 gas cylinder;

VISUAL INSPECTION CHECKLIST PRIOR USAGE

It is advisable to conduct the following checks periodically after purchasing SMA1500. It must be emphasised here that your SMA150 should be properly maintained in order for it to perform effectively in times of need. By doing so may extend it's life span.

Figure 3 illustrates how the valise Velcro sides can be separated by using the small yellow tab to expose the inflation mechanism & the bladder.

1 Ascertain whether the gas cylinder has been used.
- For both models, unscrew to remove the gas cylinder from the inflator. **Replace the gas cylinder if it is pierced on the head end.** (See Fig 3)

2 For both models check whether the green indicator clips are intact --- not missing or broken (See Figure1 for SMA1501 & Figure 5 & 6 for SMA1502). **If missing or broken, replace them.**
For the SMA1502, ensure that the green auto firing indicator is not missing. If missing, it may suggest that the unit has been fired. Hence, replace the green indicator & the auto cartridge (See Figure 6)

3 Check the physical condition of the bladder fabric and its attachments. Replace the PFD if it is damaged or has deteriorated.

4 Check for inflation leakage
- Gently uncap the dust cap of the oral tube;
- Inflate the buoyancy bladder by mouth until it is firm and leave it overnight;
- If it is airtight, it should remain inflated and firm the next day;
- If the buoyancy bladder is soft the next day, it indicates a leakage. Replace the PFD or get in touch with Safety Marine Australia.
5 Deflate the Buoyancy Bladder
- Reverse dust cap of the oral tube and insert it into the valve or gently depress the valve with your fingertip.
- Gently squeeze the inflated bladder until all air or gas has been expelled.
- Put back the dust cap back in its stowed position (see fig 4).

6 If everything is intact, ensure that the gas cylinder is screwed onto the inflator hand tight.

7 For both models, ensure the manual pull toggle is in the up and ready position with the green manual indicator clip is in place. (See figures 1 & 5) For SMA 1062, ensure that the automatic cartridge auto firing indicator is screwed on to the inflation unit hand tight (see fig 5).

Your buoyancy bladder is now ready for repacking into the valise. Please refer to the repacking instructions section outlined in this manual.

Once your PFD is repacked, your Inflatable PFD is ready for use.
Fill out log card with the date of inspection

ROUTINE INSPECTIONS OF YOUR PFD

WARNING:

Seek help if you are not confident in the self inspection and servicing of your Inflatable PFD in accordance with these instructions. Take your Inflatable PFD to a Roaring Forties service station for professional servicing or contact Safety Marine Australia (see contact information on front of this manual). Before each boating outing, it is crucial that you check your PFD for the following:-

- It is free of tears and punctured holes;
- The straps, sewing seams & stitching are strong & intact;
- All other components are in good condition.

Inspect the inflatable portion of the PFD in accordance with the CARE AND MAINTENANCE INSTRUCTIONS.

CARE AND MAINTENANCE INSTRUCTIONS

Check the following at the intervals listed below.

1) AFTER EACH USE:

Remove and inspect the CO2 cylinder from the inflator. If your model is SMA1502, also remove the automatic cartridge.

Check and clean all components to remove the dirt. Rinse in fresh water. (except Auto Cartridge) Where there is corrosion, replace the component.

Check that the CO2 cylinder has not been pierced. If pierced or used, replace with an unused 33 gram CO2 cylinder. The cylinder for the SMA1501 is contained in accessory pack KIT160-33. The cylinder for the SMA1502 is contained in accessory pack KIT400-33.

Check the manual lever to ensure it is in the upright and ready position with the green indicator pin properly installed.

2) PERIODICALLY:

It is recommended that you test your PFD for inflation leakage every 3 months.

Inflate your PFD orally until it is firm and leave it overnight. If your PFD does not hold its firmness the next day, it means a leakage is present. You should replace your PFD or take it to a Roaring Forties service station for evaluation and/or servicing.

If no leakage is found, repack the inflatable PFD as outlined in the Repacking section.

3) ANNUALLY:



Figure 1



Figure 2



Dust cap in the stowed position



Dust cap in the deflate position



Figure 3

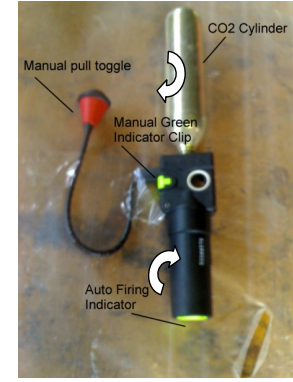
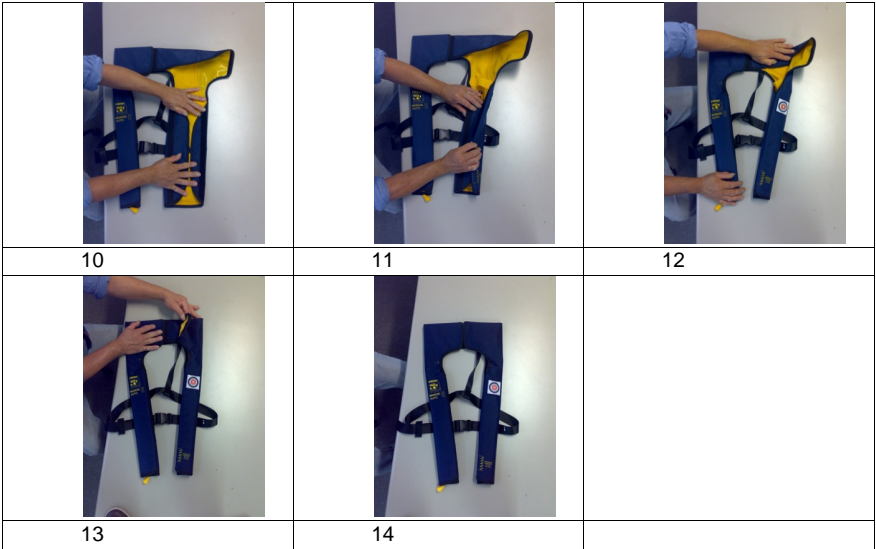


Figure 5

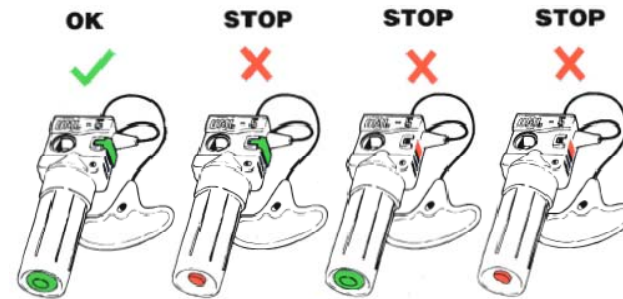


Figure 6

DEFLATING THE INFLATABLE PFD

- To deflate the inflatable PFD, reverse the oral-inflation tube dust cap and place it into the valve or depress valve with fingertip. Since the dust cap will not lock in the deflate position, it is necessary to hold it in place (Fig. 5).

- Gently squeeze the inflated bladder until all air or gas has been expelled. Do not wring or twist the inflatable bladder to avoid damaging it.

- Put the inflation tube dust cap back in its stowed position on the oral inflation tube (Fig. 5).

- Your device is ready to be re-arming

RE-ARMING ACCORDING TO YOUR MODEL

The following are the Roaring Forties re-arming kits:-

For SMA 1061, the kit to use is KIT 160.
For SMA 1062, the kit to use is KIT 400.

RE-ARMING YOUR PFD AFTER MANUAL INFLATION -SMA1501

- Unscrew the used CO2 cylinder & install an unused 33gm CO2 cylinder back to the inflator using a Roaring Forties re-arming kit (KIT 160).

- Replace the green indicator and adjust the manual lever to an upright and ready position (Fig. 1)

- Repack your PFD in accordance with instructions given in subsequent section (pg).

YOUR PFD IS NOW READY FOR USE.

RE-ARMING YOUR PFD AFTER INFLATION PFD AS MANUAL / AUTOMATIC BACKUP SMA1502

- Unscrew the used CO2 cylinder and discard it
- Unscrew and remove the auto cartridge (Fig. 6).

- Using Roaring Forties kit (KIT 400), install a new auto cartridge with the green indicator at base and gently hand tighten to the inflator.

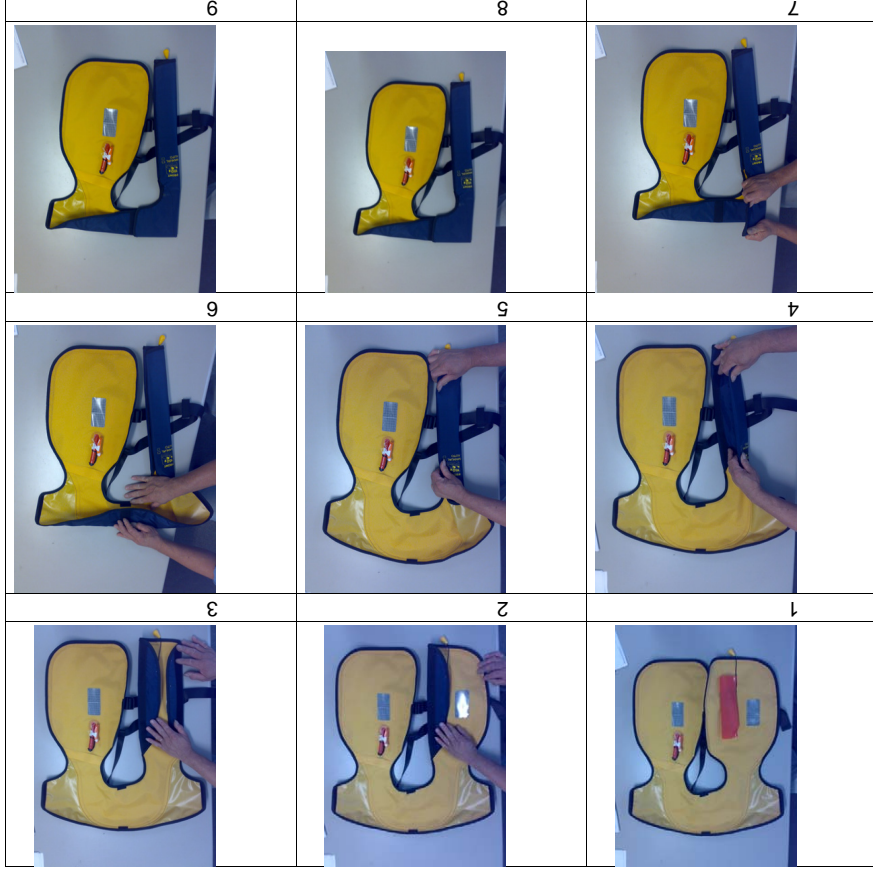
- Check to see the manual lever is in the upright and ready position with the green indicator clip properly installed. If the green indicator clip is missing or damaged, replace it (Fig. 6).

- Install an unused CO2 cylinder by screwing it into the top of the inflator and hand-tighten. Do not over-tighten as this can damage the internal gasket.

- Refold the PFD in accordance with the Repacking instructions .

4

June 10
AS11500.docx



REPACKING

CHECK AGAIN THAT YOUR PFD IS PROPERLY RE-ARMED BEFORE YOU REPACK.

Completely deflate the inflation bladder of any air or gas. Force excess air out through the inflation tube (Fig. 5). Do not wring bladder. Put the inflation tube cap back in the stowed position (Fig. 5).

The following are the steps to repack your PFD:-

5

June 10
AS11500.docx