



**SMA1060**

**INSTRUCTIONS FOR SELF INSPECTION**

**SMA1061 - MANUAL INFLATION**

**SMA1062 - AUTO INFLATION**



## CONTENTS

VISUAL INSPECTION CHECKLIST PRIOR USAGE .....	1
Deflating the Inflatable PFD.....	4
Re-arming Your PFD after Manual Inflation -SMA1061 .....	4
Re-arming your after inflation PFD as Manual / Automatic Backup SMA1062.....	4
Repacking .....	5
CARE AND MAINTENANCE INSTRUCTIONS .....	7
Roaring Forties Accessories.....	8
Cleaning and Storing of Your Inflatable PFD SMA1061 .....	8
Cleaning and Storing of Your Inflatable PFD SMA1062.....	8
WARNINGS: .....	8
Table 1 .....	1

Safety Marine Australia Pty Ltd

P.O. Box 1121

Moorabbin

VIC 3189

AUSTRALIA

Tel: +61 03 9555 5211

Fax: +61 03 9553 4380

Email:

[sales@safetymarineaust.com.au](mailto:sales@safetymarineaust.com.au)

# VISUAL INSPECTION CHECKLIST PRIOR USAGE

It is advisable to conduct the following checks periodically after purchasing SMA1060. It must be emphasised here that your SMA1060 should be properly maintained in order for it to perform effectively in times of need. By doing so may extend it's life span.

Figure 3 illustrates how the valise Velcro sides can be separated by using the small yellow tab to expose the inflation mechanism & the bladder.

- 1 Ascertain whether the gas cylinder has been used.
  - For both models, unscrew to remove the gas cylinder from the inflator. **Replace the gas cylinder if it is pierced on the head end.** (See Fig 3)
  
- 2 For both models check whether the green indicator clips are intact --- not missing or broken (See Figure1 for SMA1061 & Figure 5 & 6 for SMA1062). **If missing or broken, replace them.** For the SMA1062, ensure that the green auto firing indicator is not missing. **If missing, it may suggest that the unit has been fired. Hence, replace the green indicator & the auto cartridge (See Figure 6)**
  
- 3 Check the physical condition of the bladder fabric and its attachments. Replace the PFD if it is damaged or has deteriorated.
  
- 4 Check for inflation leakage
  - Gently uncap the dust cap of the re colour oral tube;
  - Inflate the buoyancy bladder by mouth until it is firm and leave it overnight;
  - If it is airtight, it should remain inflated and firm the next day;
  - If the buoyancy bladder is soft the next day, it indicates a leakage. Replace the PFD or get in touch with Safety Marine Australia.
  
- 5 Deflate the Buoyancy Bladder
  - Reverse dust cap of the oral tube and insert it into the valve or gently depress the valve with your fingertip.
  - Gently squeeze the inflated bladder until all air or gas has been expelled.
  - Put back the dust cap back in its stowed position (see fig 4).
  
- 6 If everything is intact, ensure that the gas cylinder is screwed onto the inflator hand tight.
  
- 7 For both models, ensure the manual pull toggle is in the up and ready position with the green manual indicator clip is in place. (See figures 1 & 5) For SMA 1062, ensure that the automatic cartridge auto firing indicator is screwed on to the inflation unit hand tight (see fig 5).
  
- 8 Your buoyancy bladder is now ready for repacking into the valise. Please refer to the repacking instructions section outlined in this manual.
  
- 9 Once your PFD is repacked, your Inflatable PFD is ready for use.

10 Fill out log card with the date of inspection



Figure 1



Figure 2



Figure 3

Dust cap in the stowed position



Dust cap in the deflate position



Figure 4

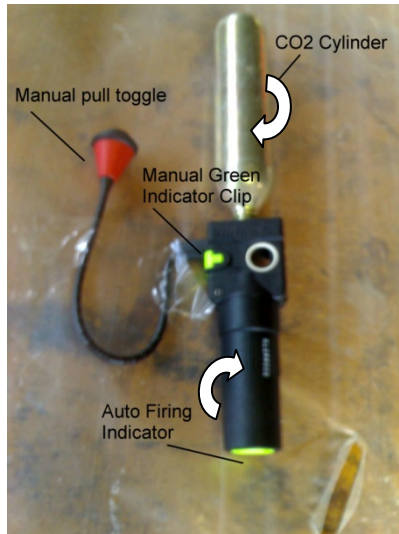


Figure 5

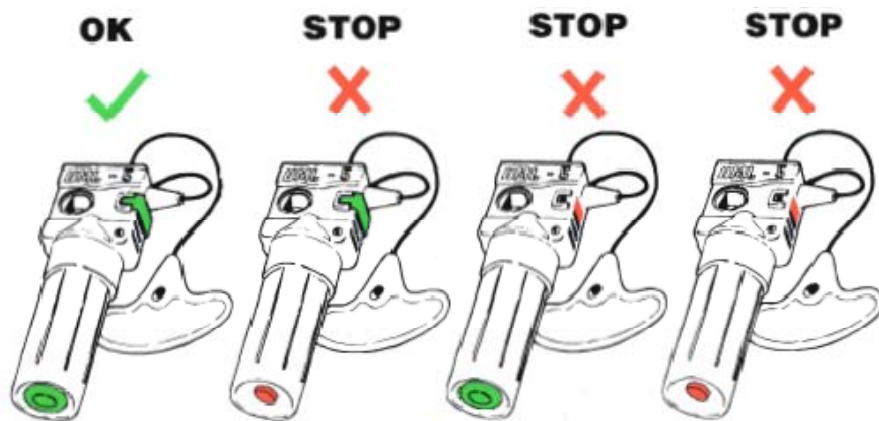


Figure 6

## Deflating the Inflatable PFD

- To deflate the Inflatable PFD, reverse the oral-inflation tube dust cap and place it into the valve or depress valve with fingertip. Since the dust cap will not lock in the deflate position, it is necessary to hold it in place (Fig. 4).
- Gently squeeze the inflated bladder until all air or gas has been expelled. Do not wring or twist the Inflatable bladder to avoid damaging it.
- Put the inflation tube dust cap back in its stowed position on the oral inflation tube (Fig. 4).
- **Your device is ready to be re-arming**

## RE-ARMING ACCORDING TO YOUR MODEL

The following are the Roaring Forties re-arming kits:-

**For SMA 1061, the kit to use is KIT 160.**

**For SMA 1062, the kit to use is KIT 400.**

### Re-arming Your PFD after Manual Inflation -SMA1061

- Unscrew the used CO2 cylinder & install an unused 33gm CO2 cylinder back to the inflator using a Roaring Forties re-arming kit (KIT 160).
- Do not over-tighten as this may damage the gasket
- Replace the green indicator and adjust the manual lever to an upright and ready position (Fig. 1)
- Repack your PFD in accordance with instructions given in subsequent section (pg ).

**YOUR PFD IS NOW READY FOR USE.**

### Re-arming your after inflation PFD as Manual / Automatic Backup SMA1062

- Unscrew the used CO2 cylinder and discard it
- Unscrew and remove the auto cartridge (Fig. 6).
- Using Roaring Forties kit (KIT 400), install a new auto cartridge with the green indicator at base and gently hand tighten to the inflator.

- Check to see the manual lever is in the upright and ready position with the green indicator clip properly installed. If the green indicator clip is missing or damaged, replace it (Fig. 6).
- Install an unused CO2 cylinder by screwing it into the top of the inflator and hand-tighten. Do not over-tighten as this can damage the internal gasket.
- Refold the PFD in accordance with the Repacking instructions

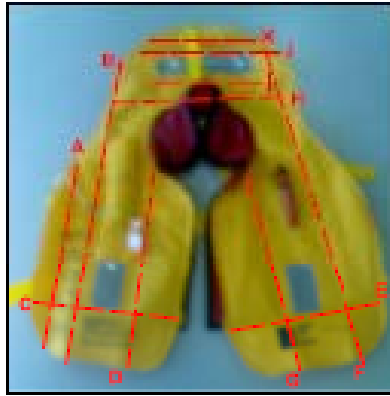
## Repacking

### **CHECK AGAIN THAT YOUR PFD IS PROPERLY RE-ARMED BEFORE YOU REPACK.**

Completely deflate the inflation bladder of any air or gas. Force excess air out through the inflation tube (Fig. 5). Do not wring bladder. Put the inflation tube cap back in the stowed position (Fig. 5).

The following are the steps to repack your PFD:-

- 1 Right Hand Side. Fold (A) across the front along the dotted line (Fig 9 2.).
- 2 Fold side (B) underneath along dotted lines.
- 3 Fold (C) up on top
- 4 Fold (D) on top ensure Inflator toggle is not folded inside bladder.
- 5 Close Valise cover and secure with Hook loop closure ensure Inflator toggle is outside of jacket.
- 6 Left Hand Side. Fold E up along dotted line
- 7 Fold F on top along dotted line
- 8 Fold G on top along dotted line
- 9 Close Valise cover and secure with Hook and loop closure
- 10 Head support. Concertina fold the head support ensuring the retro tape is not creased Fig 9 10 – 13.
- 11 The PFD final appearance when correctly folded per Fig 9 14



1.

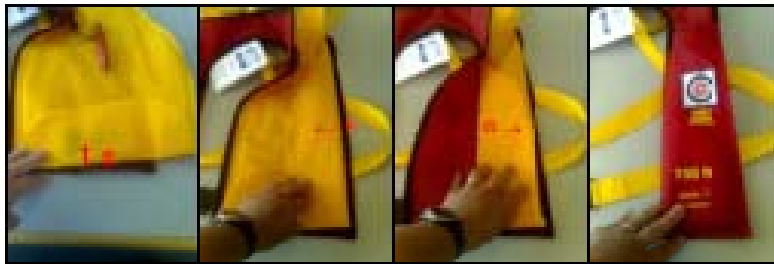


2

3

4

5



6

7

8

9

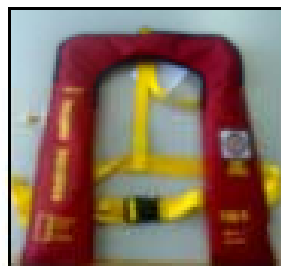


10

11

12

13



14

**Figure 9**

## ROUTINE INSPECTIONS OF YOUR PFD

### Warning:

**Seek help if you are not confident in the self inspection and servicing of your Inflatable PFD in accordance with these instructions. Take your Inflatable PFD to a Roaring Forties service station for professional servicing or contact Safety Marine Australia (see contact information on front of this manual).**

Before each boating outing, it is crucial that you check your PFD for the following:-

- It is properly armed;
- It is free of tears and punctured holes;
- The straps, sewing seams & stitching are strong & intact;
- All other components are in good condition.

Inspect the inflatable portion of the PFD in accordance with the CARE AND MAINTENANCE INSTRUCTIONS.

## CARE AND MAINTENANCE INSTRUCTIONS

Check the following at the intervals listed below.

1) After Each Use: Remove and inspect the CO2 cylinder from the inflator. If your model is SMA1062, also remove the automatic cartridge.

- i. Check and clean all components to remove the dirt. Where there is corrosion, replace the component.
- ii. Check that the CO2 cylinder has not been pierced. If pierced or used, replace with an unused 33 gram CO2 cylinder. The cylinder for the SMA1061 is contained in accessory pack KIT160. The cylinder for the SMA1062 is contained in accessory pack KIT400.
- iii. Check the manual lever to ensure it is in the upright and ready position with the green indicator pin properly installed.

2) Periodically: Recommended that you test your PFD for inflation leakage every 3 months.

- i. Inflate your PFD orally until it is firm and leave it overnight. If your PFD does not hold its firmness the next day, it means a leakage is present. You should replace your PFD or take it to a Roaring Forties service station for evaluation and/or servicing.

If no leakage is found, repack the Inflatable PFD as outlined in the Repacking section.

3) Annually:

- i. Fully inflate your PFD and hold oral tube valve under water to test for valve leakage. If bubbles appear, deflate and reinflate to test again. If it continues to leak, take your Inflatable PFD to your nearest Roaring Forties dealer for proper attention.
- ii. Visually examine your PFD for physical damage like excessive abrasion, wear & tear, suspect stitching and contamination. Send it to your Roaring Forties service station for evaluation and/or servicing if you are confident in undertaking the task.
- iii. Replace the automatic cartridge if expired or will expire within 12 months.

If the results of all the required tests and visual inspections are satisfactory, you now have to rearm your PFD and repack PFD as described above. And record details in Table 1

4) Bi-annually

Return you unit back to an authorised service station for a calibrated service inspection.

## Roaring Forties Accessories

Re-arm kit (KIT160) For SMA 1061

Re-arm kit (KIT400). For SMA 1062

## Cleaning and Storing of Your Inflatable PFD SMA1061

Remove the CO2 cylinder. Use warm, soapy water to hand wash your PFD with a sponge and rinse it off with clean water. Dry your PFD using a plastic coat hanger. After drying, remember to re-reinstalled the CO2 cylinder to the inflator. See **Re-arming your PFD After Manual Inflation (SMA1061)**.

Your Inflatable PFD should be stored in a warm, well ventilated & dry place & out of direct sunlight.

Storage Temperature between 5°C and 60°C

## Cleaning and Storing of Your Inflatable PFD SMA1062

Remove the CO2 cylinder and auto cartridge. Keep the cartridge dry. Use warm, soapy water to hand you're your PFD with a sponge. Rinse your PFD with clean water. Dry Inflatable PFD using a plastic coat hanger. Ensure the inflator is thoroughly dry before installing the automatic cartridge. Make sure to re-install an unused CO2 cylinder, (see **Re-arming your PFD SMA1062 as Manual with Automatic Backup or Manual only**).

Your Inflatable PFD should be stored in a warm, well ventilated & dry place and out of direct sunlight.

Storage Temperature between 5°C and 60°C.

## WARNINGS:

**Do not repair or alter the design of your PFD;**

**Do not double inflate your PFD – an action where an oral inflation is followed up with a COs gas cylinder inflation. This may over pressurise your PFD. Thus causing unnecessary damage to your PFD & even personal injury;**

**Do not use other size CO2 cylinder except 33gm CO2 gas cylinder;**

**Do not flex, twist or wring your PFD unnecessary;**

**Do not store your PFD in confined areas for an automatic. Inadvertent inflation may cause damage;**

**Do not place your PFD in front of heater or direct sunlight. Your PFD welded seams may delaminate rendering your PFD as unusable.**

**Do not forget to routinely check the integrity of you PFD**

